

GEAUGA COUNTY GEODETIC SURVEY
MONUMENT RECORD

STATION: Mon # 591

TOWNSHIP: Auburn

STATE PLANE COORDINATE SYSTEM:

OHIO NORTH ZONE.

HORIZONTAL CONTROL DATA

VERTICAL CONTROL DATA

TYPE: _____

TYPE: _____

ORDER: _____

ORDER: _____

LATITUDE: _____
LONGITUDE: _____

ELEVATION (FEET):
1217.37

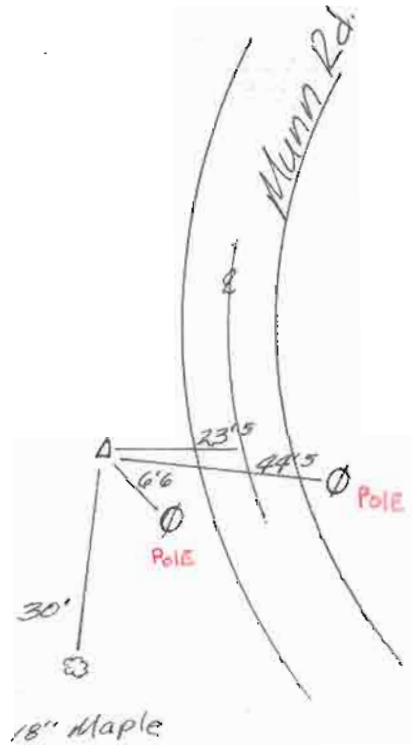
Y(NORTH) (FEET): _____
X(EAST) (FEET): _____

ELEVATION (METERS): _____

Y(NORTH) (METERS): _____
X(EAST) (METERS): _____

DESCRIPTION:

*Howard Sealy (a surveyor)
could not find this
Benchmark
3-25-94*



THE MONUMENTS SET BY THIS SURVEY ARE 2.5" DIAMETER BRASS PLATES SET IN CONCRETE POSTS. THE PLATE READS, GEAUGA COUNTY CONTROL SURVEY, THE MONUMENTS SHOULD ACTUATE MAGNETIC LOCATOR DEVICES.

RECOVERY NOTES: